

Soil and Water Conservation Districts are working in every county of the state providing many public benefits and services, such as:

- ◆ They help landowners control wind and water erosion on construction sites, farms and public lands.
- ◆ They help communities and individuals prevent mudslides and damage to homes.
- ◆ They plant trees and other land cover to hold soil in place, provide wildlife food and cover and beautify neighborhoods.
- ◆ They help with flood control and drought management program.
- ◆ They teach young people about natural resources and why they must be protected.
- ◆ They protect farmlands to assure an ample supply of high quality food.
- ◆ They help prevent water pollution.
- ◆ They encourage protection of our best farmlands from conversion to non-farm uses.
- ◆ They help provide recreational opportunities for public enjoyment.
- ◆ They help manage and conserve water supplies for all beneficial uses.

- ◆ They help protect beaches, streams and rivers.
- ◆ They help improve and establish habitat for fish, and wildlife.

The Polk SWCD is a source of public, local information and education on natural resources.

We can provide information on :

Technical Assistance — Site specific land, plant, soil, and water information.

Land Management — Plan and implement conservation practices to improve ecosystem health.

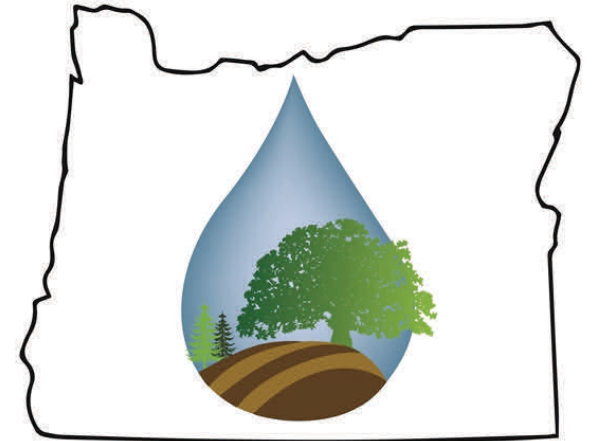
Funding Opportunities — Grants and programs coordinated with other agencies to accomplish habitat restoration.

Conservation — Helping landowners protect important wetland, riparian, and oak savanna habitats.

The District's major concern is conservation and wise use of renewable natural resources. Conservation practices benefit all Oregonians by protecting our food and fiber resource - the soil. The result is cleaner water, more productive crop, pasture, range and forestland and improved wildlife habitat.

RIVERS, CREEKS AND WATERSHED COUNCILS OF POLK COUNTY, OREGON

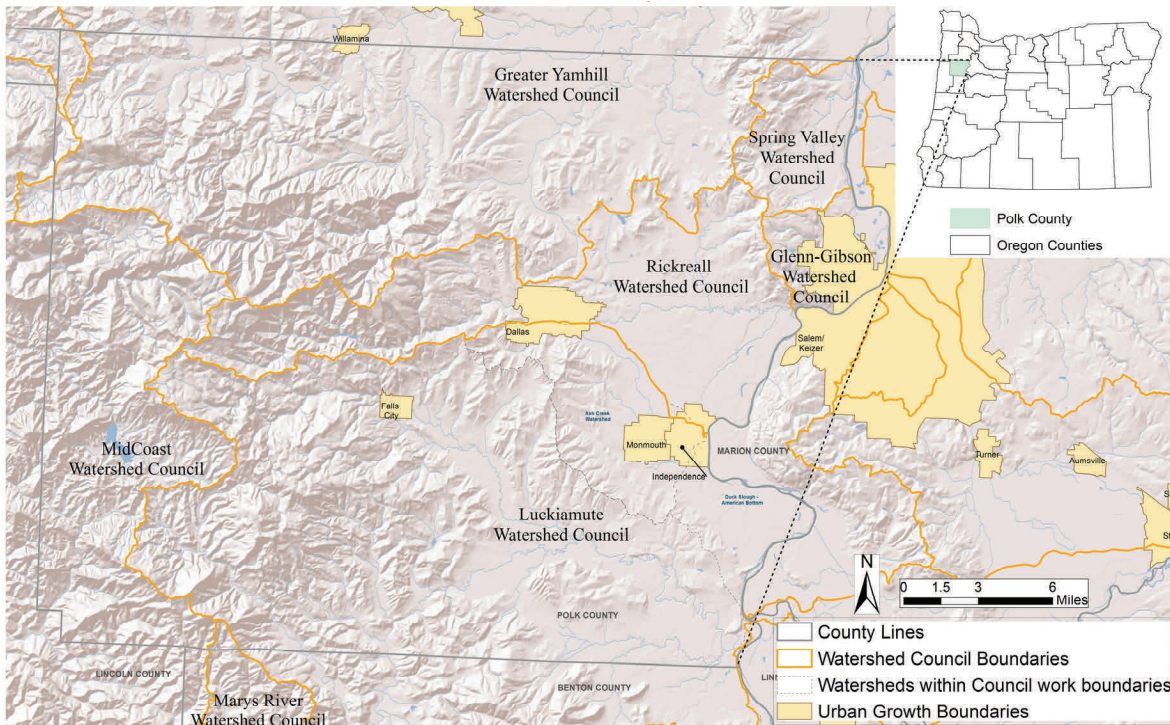
INFORMATION
PROVIDED BY:



POLK SOIL & WATER
CONSERVATION DISTRICT

580 MAIN STREET, SUITE A
DALLAS, OR 97338
503-623-9680

WWW.POLKSWCD.COM
POLK.SWCD@POLKSWCD.COM



Ash Creek

Ash Creek is located in the east central portion of Polk County. The creek flows generally west to east from the foothills near Dallas to the Willamette River at Independence. The watershed drains approximately 36.4 square miles and flows through portions of Monmouth and Independence. The highest point of the drainage is about 900 feet in elevation and the lowest is at 130 feet where Ash Creek enters the Willamette River. Ash Creek is under the jurisdiction of the Luckiamute Watershed Council. Please contact them for more information on programs or volunteer opportunities.

South Yamhill River

Approximately one-sixth of the **Yamhill River** basin is located within Polk County. The Bureau of Land Management claims that approximately 307 stream miles exist within the Yamhill River watershed, with mainstream tributaries generally flowing south toward the South Yamhill River.



For more information on programs and volunteer opportunity please contact:

Luke Westphal - Council Coordinator
NE Ford Street, Suite 9
McMinnville, OR 97128
503-474-1047
www.gywc.org

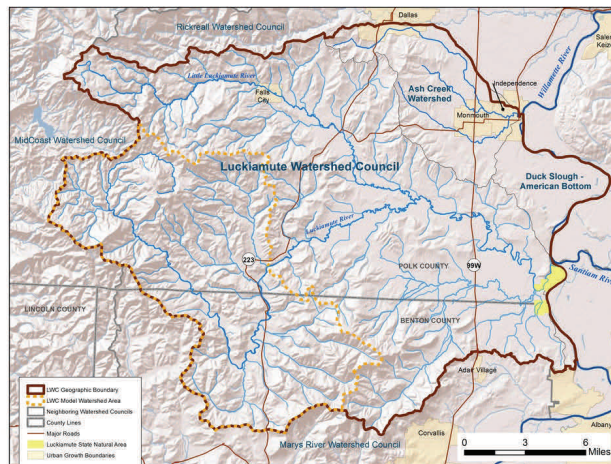
Luckiamute River

The Luckiamute River is a major drainage in the southern portion of Polk County. The basin includes both the Luckiamute River to the south and the Little Luckiamute River to the north. The watershed area encompasses approximately 368 square miles. The two primary land uses within the watershed are agriculture and forestry.

For more information regarding programs and volunteer opportunities on both Ash Creek and the Luckiamute please contact:



Kristen Larson - Council Coordinator
226 S. Main, Suite L, Independence, OR
503-837-0237
info@luckiamutelwc.com
<http://www.luckiamutelwc.org>



Map of the Luckiamute Watershed (w/ Ash Creek)

Glenn and Gibson Creeks

Glenn and Gibson Creeks originate in the West Salem Hills. Draining an area of 10.4 square miles of West Salem, the upper reaches flow through undeveloped property and are located along steep terrain with flatter slopes near the basin outlet. Streams associated with this drainage system flow down steeper gradients than on the valley floor and channels tend to be narrow and lack broad floodplain or riparian areas. **The Glen Gibson and Rickreall share a coordinator.**



Rickreall Creek

Rickreall Creek originates in the Coast Range at an elevation of about 3,500 feet and flows eastward to an elevation of 140 feet at its confluence with the Willamette River. The watershed includes forested areas in the Coast Range, the Dallas urban area, and agricultural areas further east. The Rickreall watershed area encompasses approximately 98 square miles.



For more information regarding programs and volunteer opportunities at both the Glen Gibson and Rickreall please contact:

Lucas Hunt - Council Coordinator
580 Main Street, Suite A, Dallas OR
503-623-9680
Lucas.hunt@polkswcd.com